



HONGXIN MOLD TECHNOLOGY ENTERPRISE BROCHURE

Address: Huandiqiao, Daye City, Hubei Province, China

Tel: 0086-714-5331110

Fax: 0086-714-5331119

Email: info@hx-moldtech.com

Website: www.hx-moldtech.com

Ingots Casting Forging Rolling Precise Machining Sales

Daye Hongxin Mold Technology Co., Ltd.

CATALOGUE

CATALOGUE

Hongxin Mold Technology Enterprise Brochure

CONTENTS

DEVELOPMENT HISTORY

GEOGRAPHICAL LOCATION

COMPANY PROFILE

ENTERPRISE CULTURE

EQUIPMENTS INTRODUCTION

THE PRODUCTION PROCESS

PRODUCTS INTRODUCTION

COMPANY HONOR

COMPANY PATENTS

MARKETING

COMPANY PROFILE

DEVELOPMENT HISTORY

2001

Daye Hongxin Special Steel Co., Ltd. was established in 2001.

2006

The branch company Daye Xincheng Special Steel Co., Ltd. was established in 2006. The two companies are a one-stop enterprise for high alloy steel integrating ingots casting, forging, machining and sales. The two companies cover an area of more than 150 acres.

2017.6

Daye Hongxin Mold Technology Co., Ltd. was established in July, 2017. The company is a new material high-tech enterprise jointly transformed and upgraded by Hongxin and Xincheng Special Steel. It mainly produces high-alloy steel with rolling processing and mechanical parts machining and has upgraded to new material research and development and precision mold processing. The three companies give full plays to the advantages of all parties, integrate high-quality resources, construct enterprise brand, and jointly build a high-tech company with innovative technologies and a complete industrial chain of new material.

GEOGRAPHICAL POSITION

Hongxin Mold Technology, Hongxin Special Steel, and Xincheng Special Steel are located in Daye Lake High-tech Zone Industrial Park, Daye City, Huangshi, Hubei, China. The geographical location is prosperous and the transportation is convenient, with Huangshi West Station Expressway in the south and Huangshi New Terminal in the north connected to the Yangtze River barge shipping. In line with the economic prosperity of coastal cities, it leads to civilization and culture, scientific, technological development and brings a network communicating circle.



Daye Hongxin Mold Tech Co., Ltd. >>>

COMPANY PROFILE

Daye Hongxin Mold Technology Co., Ltd. is a high-tech enterprise that produces hot forging and rolling high-alloy steel and finishing of mechanical parts. It has a total investment of 800 million RMB and covers an area of 150 acres. There are more than 1,000 employees, including more than 230 senior titles and technical professionals. The company adopts high-end technology and uses energy-saving, environmentally and efficient CNC machineries and equipments (ferrous metal high alloy ingots casting, vacuum degassing, furnace refining, hydraulic forging hammers, 850mm hot rolling lines, heat treatment equipments and various specifications and models of CNC machine tools, CNC machining center, precision grinder, fast/slow wire machine, drilling machine, etc.). After the entire line is put into production, the company will have an optimized production process: a high-alloy product production chain from raw materials - smelting - refining - forging - rolling - heat treatment - milling and grinding - finishing - physical and chemical inspection of finished molds. The products are widely used in: Various high-end electronic equipments, auto parts, industrial and agricultural machinery equipment accessories, models and rollers, etc.

At present, the company is a nationally recognized high-tech enterprise, owns a high-tech R&D team, and has obtained a number of national patents. After the entire line put into operation, it is expected to produce more than one million pieces of high-end equipments and electronic parts annually, and hundreds of thousands of high-alloy rolling shaft parts, wear-resistant parts, temperature-resistant parts and special-shaped parts for industrial and agricultural machineries and equipments. There are more than tens of thousands of tons of ferrous metal smelting and casting ingots, the annual output value exceeds more than 800 million RMB, and the annual tax exceeds 80 million RMB. The company has now established a strong sales network and a complete customers' service system, and the products are sold to more than 20 countries. It has multiple branches and a foreign trade company. Each branch is equipped with a full set of finishing equipment and can customize products according to customer requirements. In order to increase market, it plans to invest more than 100 million yuan in the next few years to import a set of high-end technical equipment "3D printing cast metal parts" production line, earns the company a leading position in the industry.

ENTERPRISE CULTURE

Enterprise Purpose

People-Oriented; Honesty; Innovation; Repay Society



Enterprise Vision

Create a Chinese Famous Brand
Manufacture World-Advanced Products



Enterprise Spirit

Innovation, Development
Quality-Oriented, Explore Potential, Creation, Advance





HOT ROLLING PRODUCTION LINE



Wire-Cut Machine



Turning Lathe



Milling Machine



Refining Furnace



Vacuum Degassing



Electroslag Furnace



Sawing Machine



Grinding Machine



Flatting Machine



Hydraulic Forging Hammer



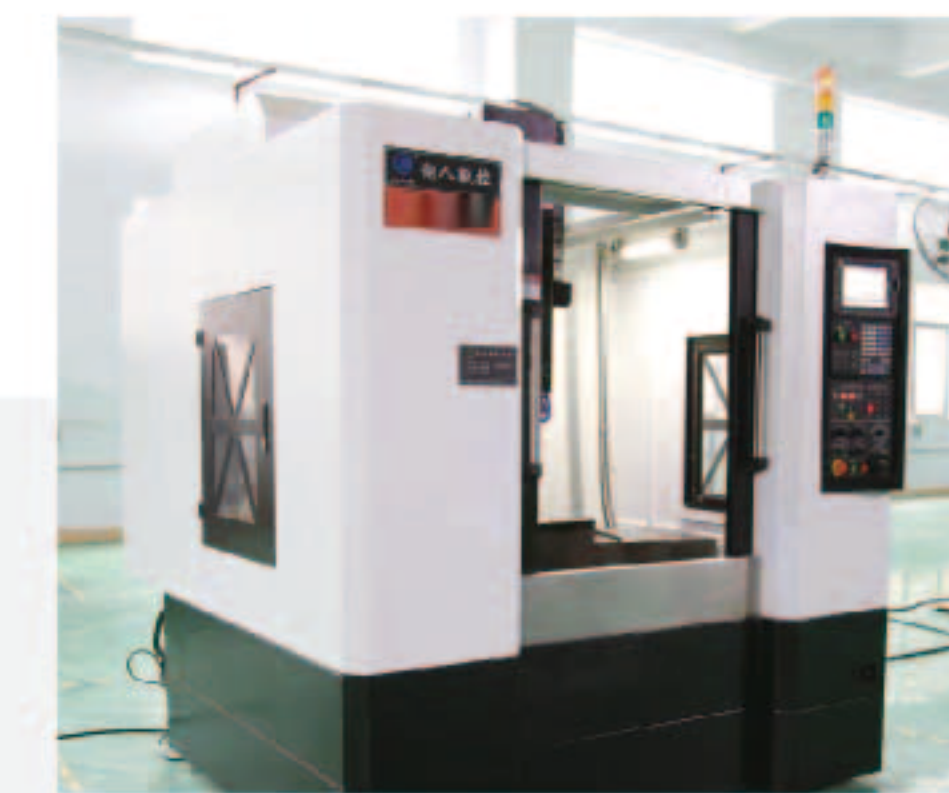
Hot Rolling Production Line



Heat Treatment



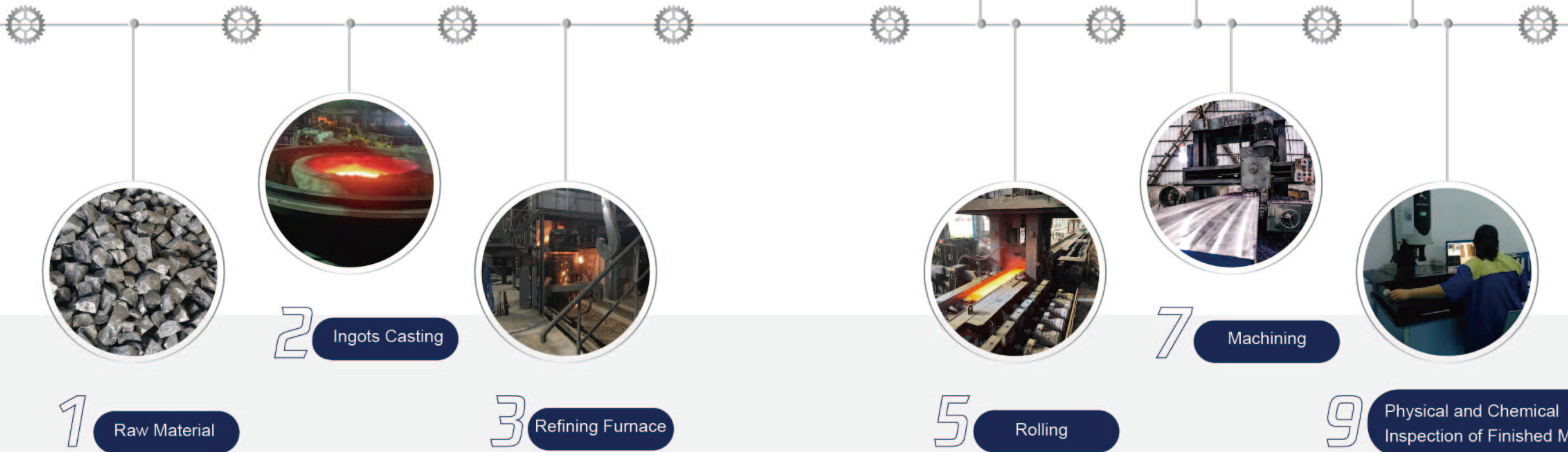
Middle Speed Wire Cutting Machine



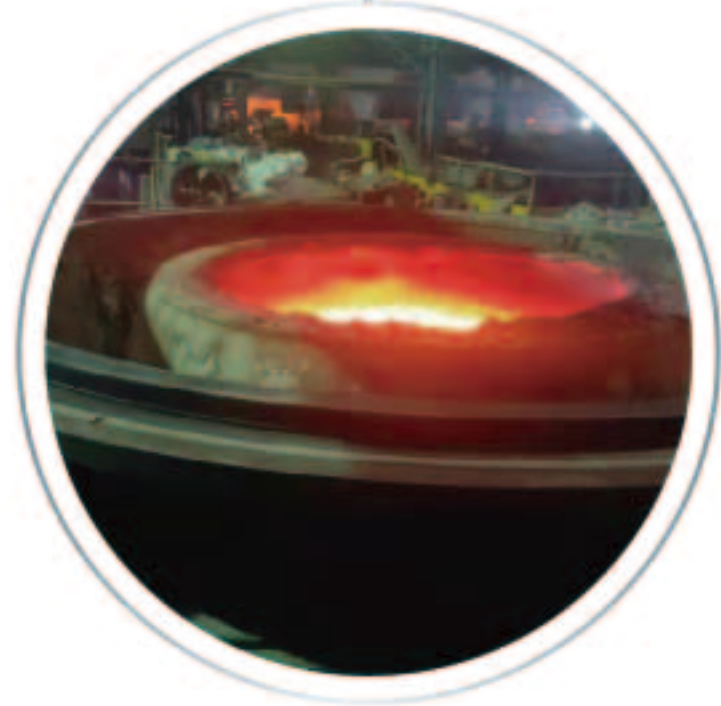
CNC Machining Center



TECHNOLOGICAL PROCESS OF PRODUCTION



1 Raw Material



2 Ingots Casting



3 Refining Furnace



4 Forging



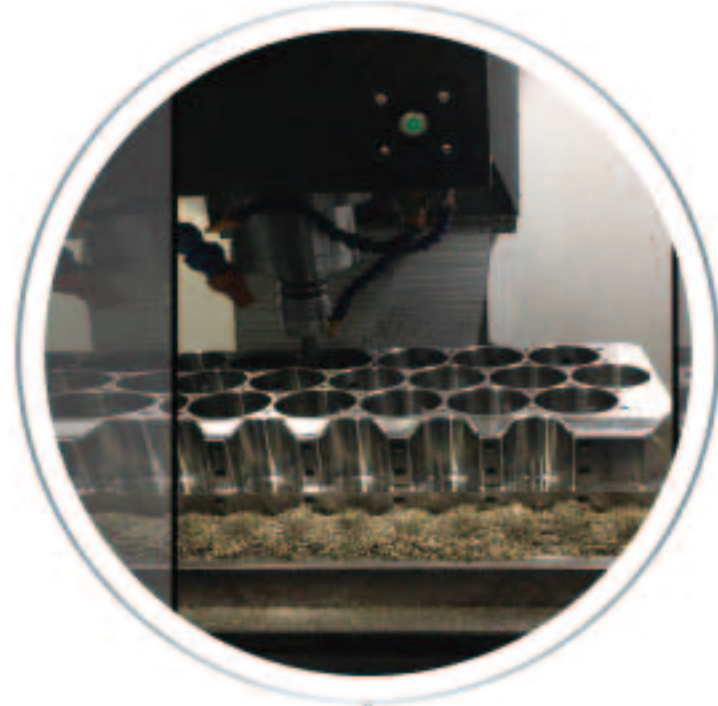
5 Rolling



6 Heat Treatment



7 Machining



8 Precision Finishing



9 Physical and Chemical Inspection of Finished Mold

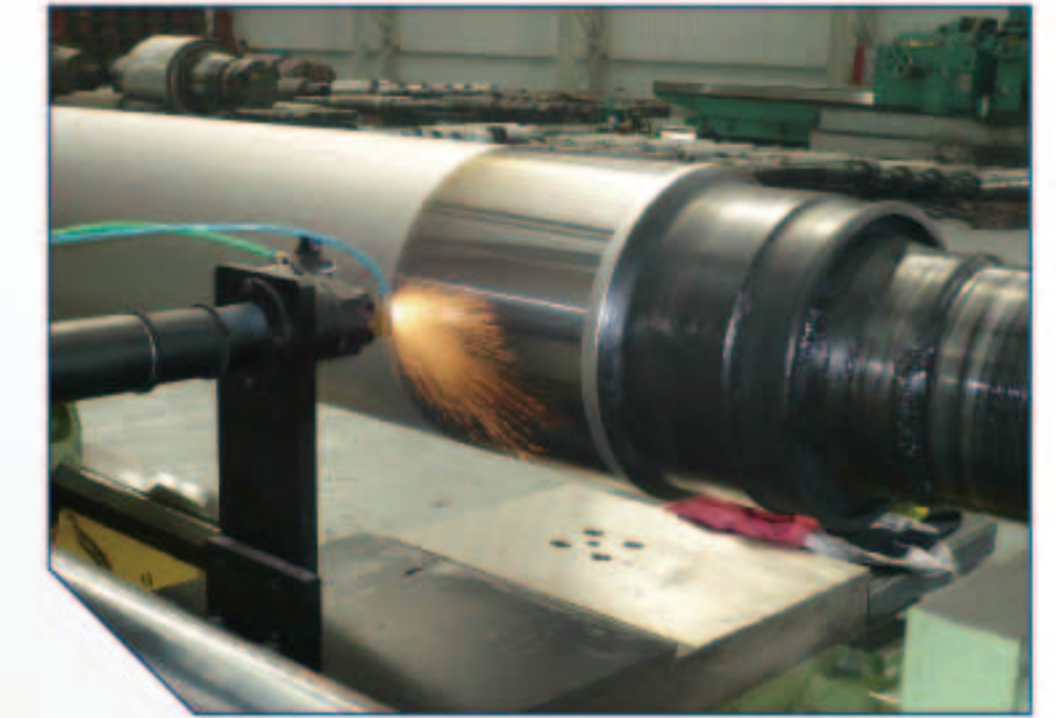
PRODUCTS INSTRUCTION

Grade	Item	Grades GB/T1299-2014	Grades ASTM A686 ASTM	Grades JISG4401 JISG4404	Grades ISO4957	Grades EN10027-2
Cutting Tool and Mold Non-Alloy Steel	1-1	T7	—	SK70	C70U	1.1520
	1-2	T8	—	SK80	C80U	1.1525
	1-3	T8Mn	W1-8	SK85	—	1.1535
	1-4	T9	W1-8 1/2	SK90	C90U	—
	1-5	T10	W1-10	SK105	C105U	1.1545
	1-6	T11	W1-11	—	—	—
	1-7	T12	W1-11 1/2	SK120	C120U	1.1555
	1-8	T13	—	—	—	—
Measuring And Cutting Tool Steel	2-1	9SiCr	—	—	—	—
	2-2	8MnSi	—	—	—	—
	2-3	Cr06	—	SKS8	—	—
	2-4	Cr2	L3	—	100Cr6	1.2067
	2-5	9Cr2	—	—	—	—
	2-6	W	F1	SKS2	—	—
Impact Resistance Tool Steel	3-1	4CrW2Si	—	SKS41	—	—
	3-2	5CrW2Si	S1	—	—	—
	3-3	6CrW2Si	—	—	—	—
	3-4	6CrMnSi2Mo1V	S5	—	—	—
	3-5	5Cr3MnSiMo1V	S7	—	—	—
	3-6	6CrW2SiV	—	—	60WCrV8	1.2550
Roller Steel	4-1	9Cr2V	—	—	—	—
	4-2	9Cr2Mo	—	—	—	—
	4-3	9Cr2MoV	—	—	—	—
	4-4	8Cr3NiMoV	—	—	—	—
	4-5	9Cr5NiMoV	—	—	—	—
Cold Worked Mold Steel	5-1	9Mn2V	O2	—	90MnCrV8	1.2842
	5-2	9CrWMn	O1	SKS3	95MnCr5	1.2825
	5-3	CrWMn	—	SKS31	—	—
	5-4	MnCrWV	—	—	95MnWCr5	—
	5-5	7CrMn2Mo	—	—	70MnMoCr8	—
	5-6	5Cr8MoVSi	—	—	—	—
	5-7	7CrSiMnMoV	—	—	—	—
	5-8	Cr8Mo2VSi	—	—	—	—
	5-9	Cr4W2MoV	—	—	—	—

Grade	Item	Grades GB/T1299-2014	Grades ASTM A686 ASTM	Grades JISG4401 JISG4404	Grades ISO4957	Grades EN10027-2
Cold Worked Mold Steel	5-10	6Cr4W3Mo2VNb	—	—	—	—
	5-11	6W6Mo5Cr4V	—	—	—	—
	5-12	W6Mo5Cr4V2	—	—	—	—
	5-13	Cr8	—	—	—	—
	5-14	Cr12	D3	SKD1	X210Cr12	1.2080
	5-15	Cr12W	—	SKD2	X210CrW12	1.2436
	5-16	7Cr7Mo2V2Si	—	—	—	—
	5-17	Cr5Mo1V	A2	SKD12	X100CrMoV5	1.2363
	5-18	Cr12MoV	—	SKD11	—	—
	5-19	Cr12Mo1V1	D2	SKD10	X153CrMoV12	1.2379
Hot Worked Mold Steel	6-1	5CrMnMo	—	—	—	—
	6-2	5CrNiMo	L6	—	—	—
	6-3	4CrNi4Mo	—	SKT6	45CrNiMo16	1.2767
	6-4	4Cr2NiMoV	—	—	—	—
	6-5	5CrNi2MoV	—	SKT4	55NiCrMoV7	1.2714
	6-6	5Cr2NiMoVSi	—	—	—	—
	6-7	8Cr3	—	—	—	—
	6-8	4Cr5W2VSi	—	—	—	—
	6-9	3Cr2W8V	H21	SKD5	X30WCrV9-3	1.2581
	6-10	4Cr5MoSiV	H11	SKD6	X37CrMoV5-1	1.2343
	6-11	4Cr5MoSiV1	H13	SKD61	X40CrMoV5-1	1.2344
	6-12	4Cr3Mo3SiV	H10	—	—	—
	6-13	5Cr4Mo3SiMnVAI	—	—	—	—
	6-14	4CrMnSiMoV	—	—	—	—
	6-15	5Cr5WMoSi	A8	—	—	—
	6-16	4Cr5MoWVSi	H12	SKD62	X35CrWMoV5	1.2605
	6-17	3Cr3Mo3W2V	—	—	—	—
	6-18	5Cr4W5Mo2V	—	—	—	—
	6-19	4Cr5Mo2V	—	—	—	1.2367
	6-20	3Cr3Mo3V	—	SKD7	32CrMoV12-28	1.2365
	6-21	4Cr5Mo3V	—	—	—	—
	6-22	3Cr3Mo3VCo3	—	—	—	—

Grade	Item	Grades GB/T1299-2014	Grades ASTM A686 ASTM	Grades JISG4401 JISG4404	Grades ISO4957	Grades EN10027-2
Plastic Mold Steel	7-1	SM45	—	—	C45U	—
	7-2	SM50	—	—	—	—
	7-3	SM55	—	—	—	—
	7-4	3Cr2Mo	P20	—	35CrMo7	1.2311
	7-5	3Cr2MnNiMo	—	—	40CrMnNiMo8-6-4	1.2738
	7-6	4Cr2Mn1MoS	—	—	—	—
	7-7	8Cr2MnWMoVS	—	—	—	—
	7-8	5CrNiMnMoVSCa	—	—	—	—
	7-9	2CrNiMoMnV	—	—	—	—
	7-10	2CrNi3MoAl	—	—	—	—
	7-11	1Ni3MnCuAl	—	—	—	—
	7-12	06Ni6CrMoVTiAl	—	—	—	—
	7-13	00Ni18Co8Mo5TiAl	—	—	—	—
	7-14	2Cr13	—	—	—	—
	7-15	4Cr13	—	—	X40Cr14	1.2083
	7-16	4Cr13NiVSi	—	—	—	—
	7-17	2Cr17Ni2	—	—	—	—
	7-18	3Cr17Mo	—	—	X38CrMo16	—
	7-19	3Cr17NiMoV	—	—	—	1.2316
	7-20	9Cr18	—	—	—	—
	7-21	9Cr18MoV	—	—	—	—
Special Purpose Mold Steel	8-1	7Mn15Cr2Al3V2WMo	—	—	—	—
	8-2	2Cr25Ni20Si2	—	—	—	—
	8-3	0Cr17Ni4Cu4Nb	—	—	—	—
	8-4	Ni25Cr15Ti2MoMn	—	—	—	—
	8-5	Ni53Cr19Mo3TiNb	—	—	—	—

Rollers



KINDS OF MOLD PIECE



Kinds of Mold Piece

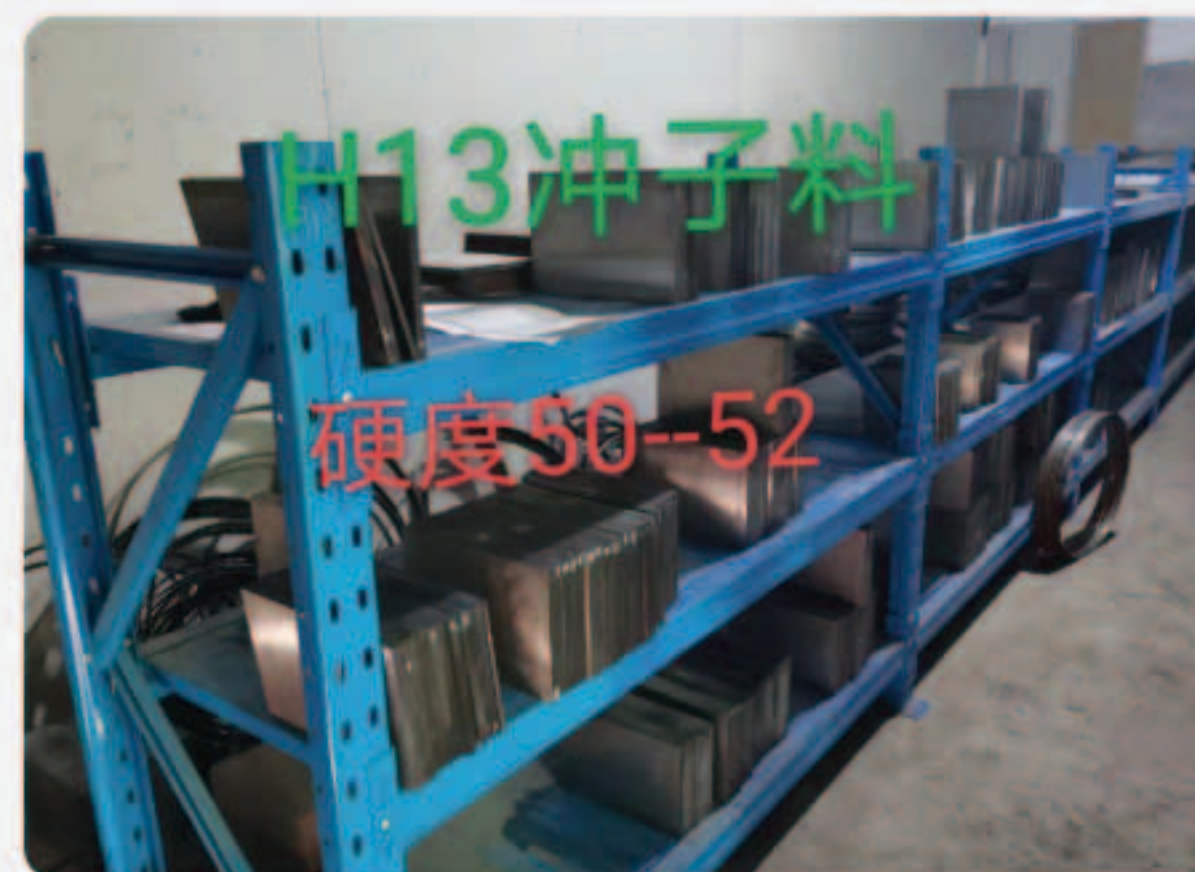
Cr12MoV Punching Pieces



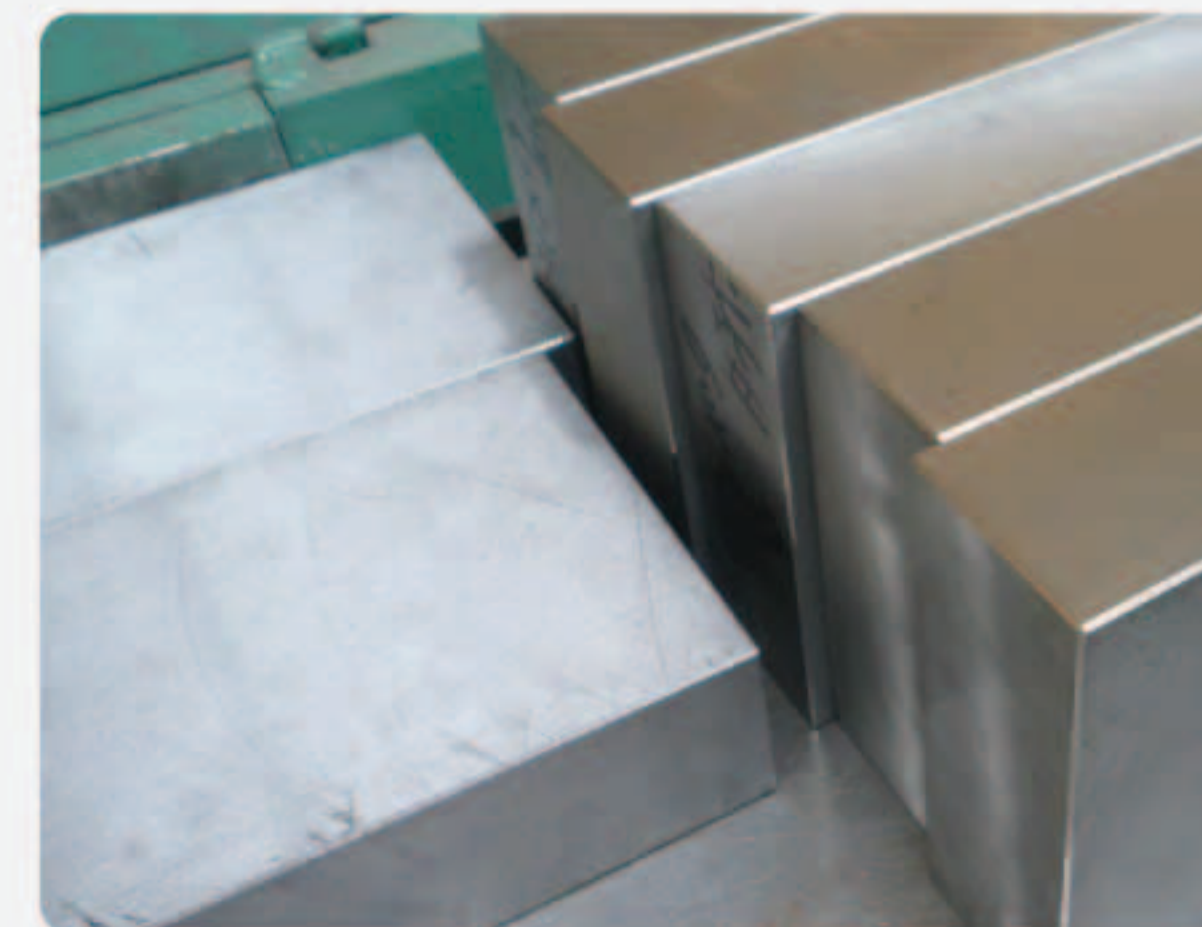
DC53 Punching Pieces



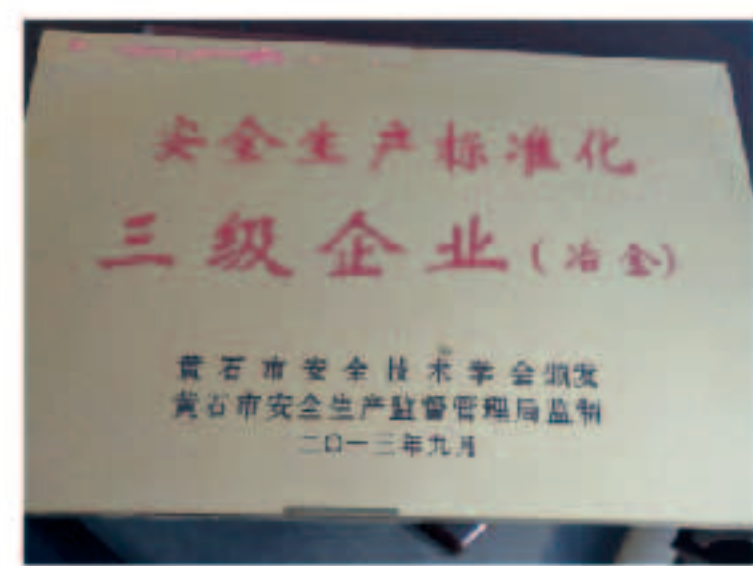
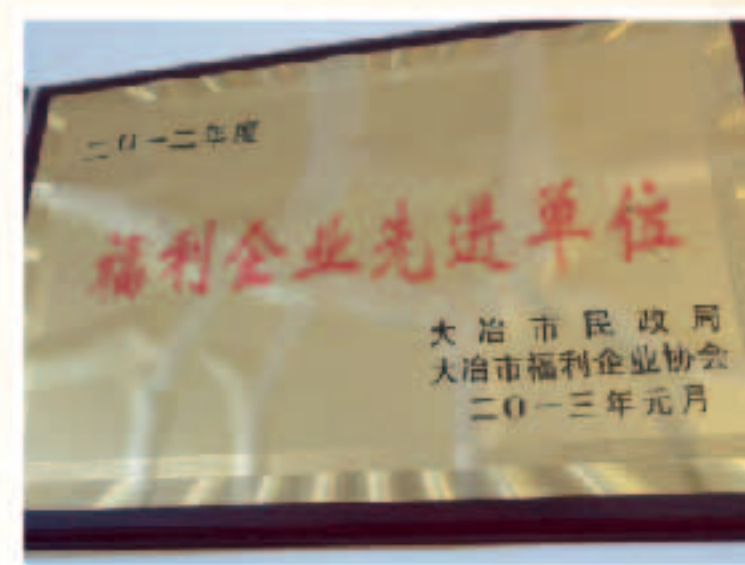
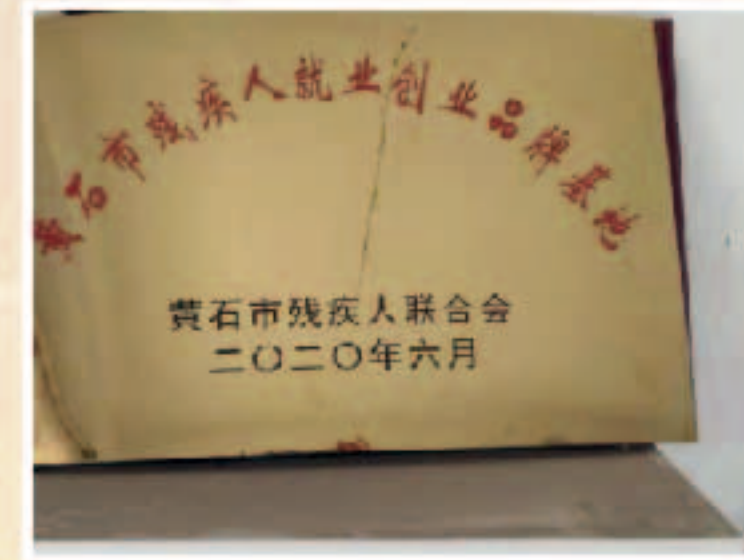
H13 Punching Pieces



Machining Pieces



COMPANY HONOR



Customer Satisfaction Company in 2005-2006.

Advanced Social Welfare Enterprise in 2011.

Advanced Welfare Enterprise in 2012.

National Welfare Model Enterprise in 2013

Advanced Employment Enterprise For The Disabled in 2013

Safety Production Standardization Enterprise in 2013

China's Top 100 Welfare Enterprise in 2014

Advanced Enterprise in Finance and Taxation in 2017

Advanced Investment Enterprise in 2019

Employment Poverty Alleviation Base in Daye City in 2019

Employment and Entrepreneurship Base for The Disabled in 2020

Hubei Employment and Entrepreneurship Base for The Disabled in 2021



COMPANY PATENTS



MARKETING





CONTAINER LOADING PICTURES

