

Product Description

- ◆ Material: 6063-T5
- ◆ Surface treatment: Anode Oxidation (Natural color)
- ◆ Suitable for KSI and KSIM series panel mounted SSR
- ◆ Available with 35mm Din-rail or screw installation



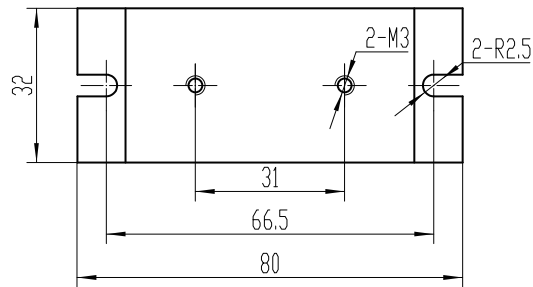
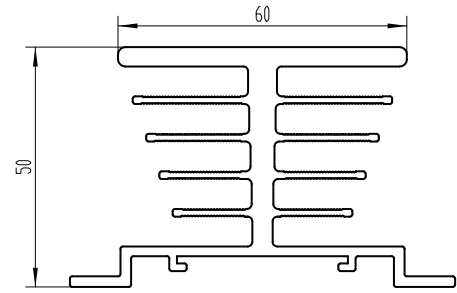
Ordering Information



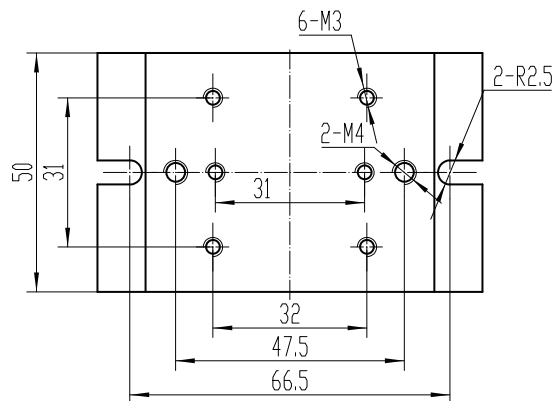
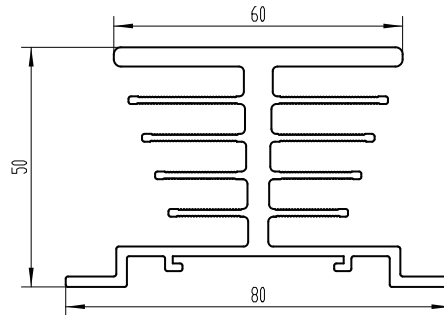
General Specifications

Series	A Series	
Part Number	KHS-A32	KHS-A50
Photo		
Material	6063-T5	6063-T5
Thermal Resistance	2.8 C/W	2.1 C/W
Net Weight(Typical)	71g	110g
Outer Dimension	80mm×50mm×32mm	80mm×50mm×50mm
Installation mode	Screw or 35mm Din-rail	Screw or 35mm Din-rail
Recommended size of mounting hole	68mm	68mm
Suitable for	SSR with mounting hole spacing of 31mm, such as KSIM series	SSR with mounting hole spacing of 31mm or 47.5mm, such as KSI, KSIM series

Outline Dimensions



KHS-A32



KHS-A50